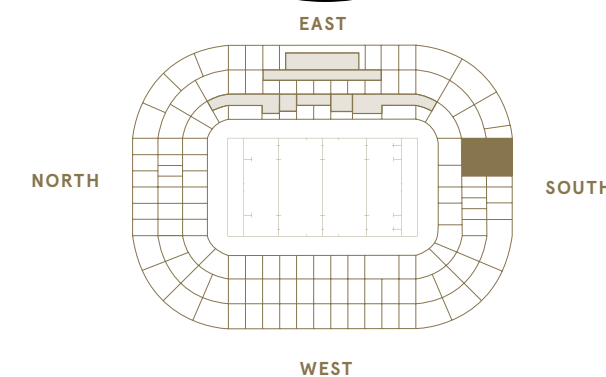
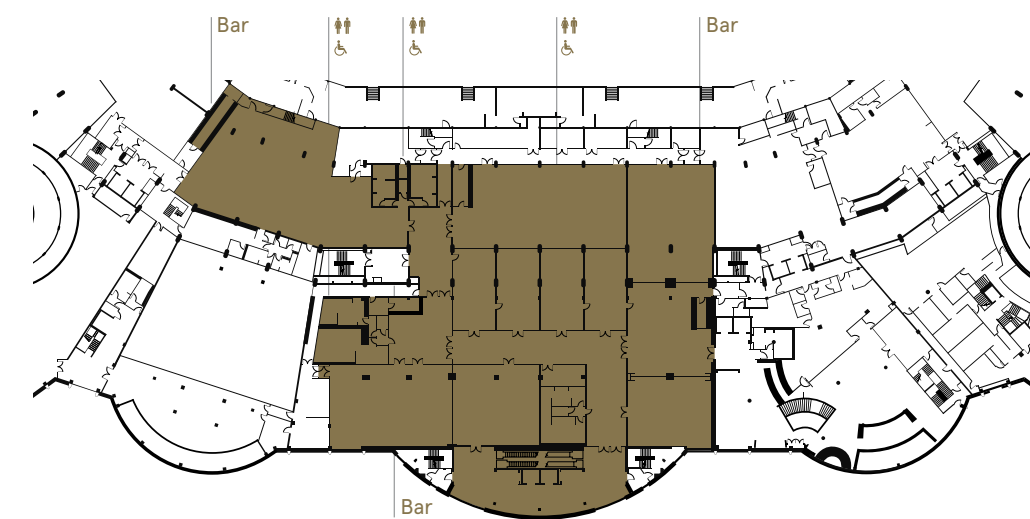


Closer To The **ACTION**

A TRUE RUGBY EXPERIENCE WITH SPORTING LEGENDS



Allocated seating



England Rugby
HOSPITALITY

Always **OFFICIAL**

THE FUTURE OF ENGLAND RUGBY HOSPITALITY

As the England team runs out onto Twickenham's hallowed turf for the first match in the 2018 Old Mutual Wealth Series, a major transformation will already have kicked off at the Home of England Rugby.

The magnificent new East Stand will be buzzing and all official match day hospitality will be sold and delivered exclusively inside the stadium by England Rugby Hospitality sales specialists supported by long standing partner Keith Prowse.

With seven fabulous facilities, four of which are brand new and exclusive to the redeveloped East Stand, Twickenham match days will combine the ultimate hospitality experience with the hottest tickets in town

The best in modern hospitality will unite with the history and heritage of the stadium and celebrate the sport's values.

To find out more or book your experience please visit online at:

ENGLANDRUGBYHOSPITALITY.COM



England Rugby
HOSPITALITY



Rugby House

T W I C K E N H A M

Authentic ATMOSPHERE

ENJOY CLASSIC RUGBY HOSPITALITY WITH ENGLAND LEGENDS

Treat your guests to the definitive Twickenham experience with the sights and sounds of rugby throughout Rugby House.

Fully refurbished in summer 2016, Rugby House, within the South Stand, offers superb match-day hospitality for customers, clients and colleagues alike.

On entering Rugby House, you will be greeted by the authentic atmosphere of a true rugby experience. Check out the replica match seats, locker room décor and rugby styling throughout the corridors, as well as rugby memorabilia from the likes of England legend Jason Leonard.

Guests will enjoy a Champagne reception, four-course lunch and complimentary drinks, plus a guest speaker pre-match to really ramp up the atmosphere before the action starts.



View from seat

Superb DINING

PACKAGE INCLUSIONS

- Four course plated menu.
- Champagne reception.
- Full bar including Guinness, premium lager, wine and soft drinks.
- Majority of seats in South Stand, lower and middle tier.
- Half time drinks served from the bar.
- Post-match Twickenham Tea.
- Guest speakers Q&A.
- Match programme.

KEY ATTRIBUTES

- Private tables of ten+.
- Private areas.
- Dedicated entrance.
- Facility opens 3.5 hours pre-match and 1.5 hours post-match.
- Hostess staff on hand to ensure that your day runs smoothly.

